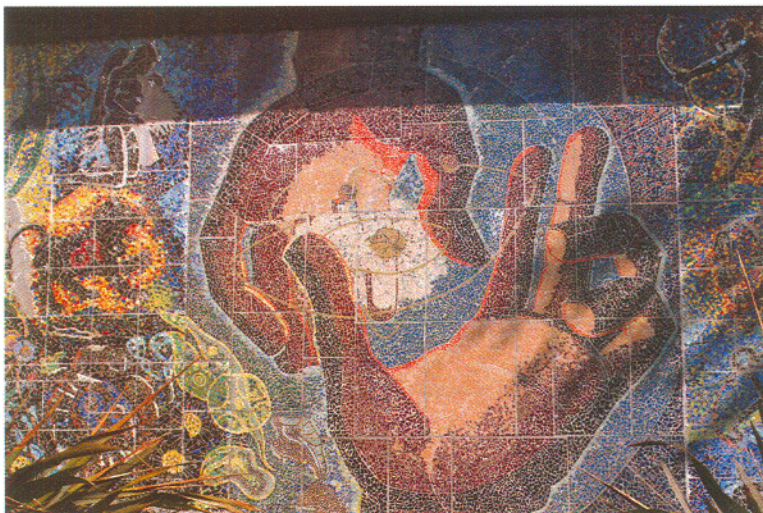


The following photographs were taken by Liz Allen on Friday, May 4, 2007

General Shots

IMG_1112.JPG

Description: A picture of the full mosaic and its surrounding environment shot from the upstairs of Haselwood Library. Unfortunately the plants obstruct the bottom right hand corner.



IMG_1126.JPG

Description: The center of the mosaic, which has had several interpretations. One could be that it is the hand of God giving the atom to man (this is the more widely accepted interpretation). Another viewpoint is that it shows the choice to use science/technology in the hands of good or evil.

IMG_1125.JPG

Description: This is the hard to see bottom right hand corner of the mosaic. It is hard to tell what this is meant to symbolize. Something that comes to mind is the strength of man.



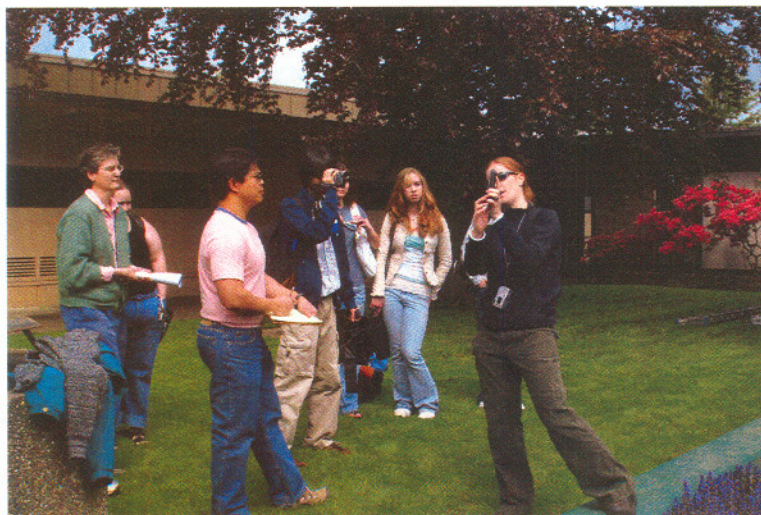
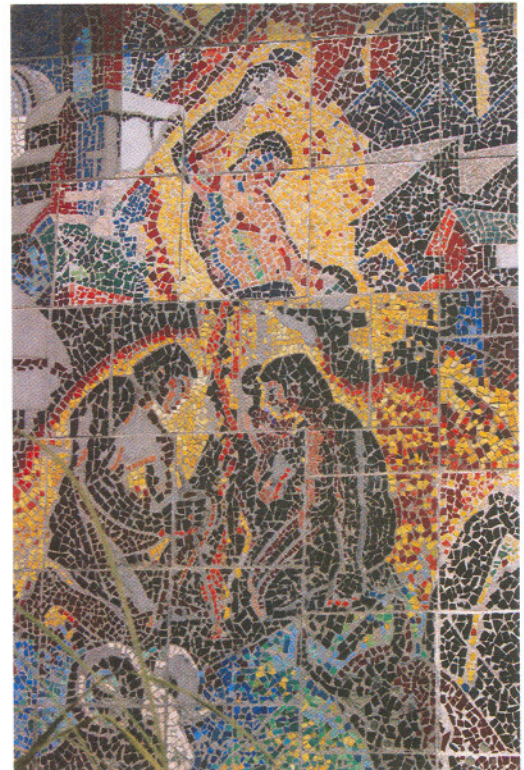


IMG_1179.JPG

Description: This image shows a merman holding a trident. It is a possibility that this is meant to be the Greek (or Roman) god Poseidon (or Neptune).

IMG_1177.JPG

Description: The bottom area of this photo appears to be the discovery of fire, while directly above is the use of fire in metal forgery. To the right of that is what appears to be factories, and to the left is a cityscape (these last two are not very visible in the picture).

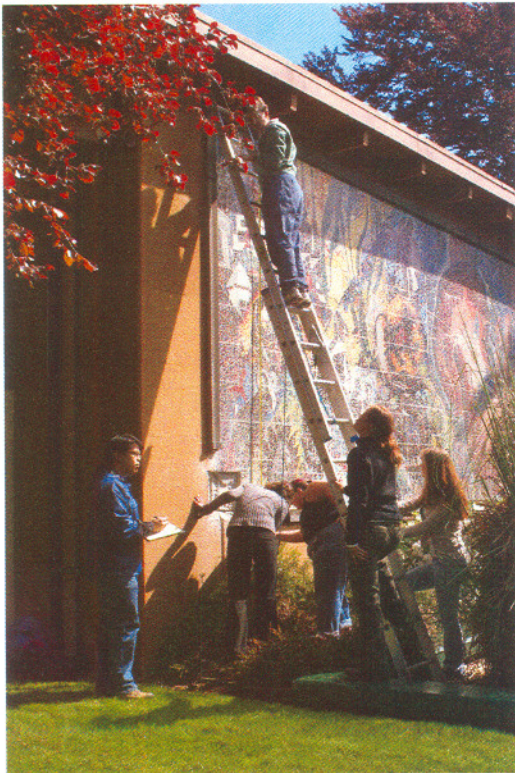
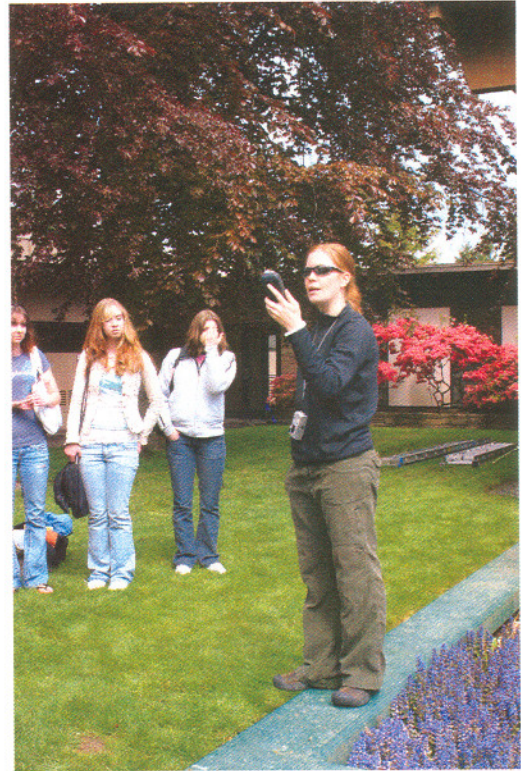


IMG_1190.JPG

Description: Archaeologist Jennifer Chambers showing students the GPS unit that is used to find the geographic location of the mosaic.

IMG_1189.JPG

Description: Another photo of Jennifer Chambers using the GPS unit.



IMG_1108.JPG

Description: Archaeology teacher Caroline Hartse climbs the ladder to help the students measure the mosaic.

Detail Shots/Points of Interest

IMG_1131.JPG

Description: The letters HB, standing for Hank Blass, the creator of the mosaic.



IMG_1134.JPG

Description: In the center of this photo is a small yellow piece which have the letters HB on them. The letters are connected in a similar fashion to his initials in the above picture. It is possible that this piece came from some type of ceramic piece made by Hank Blass himself.

IMG_1135.JPG

Description: The large blue piece of glass in the center of the picture appears to be the bottom of a bottle. ENUINE are easily made out. It likely says "genuine".



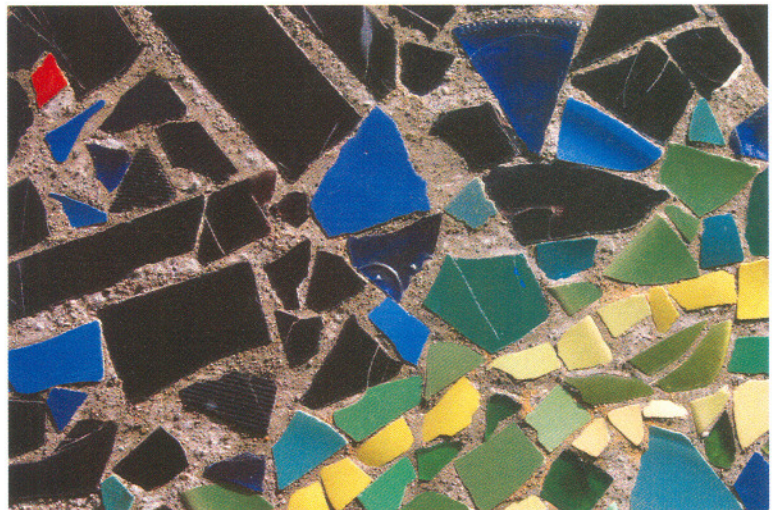


IMG_1136.JPG

Description: This shows another blue glass piece with some writing on it. It appears to be either an E or a 3, depending on which way you look at it.

IMG_1137.JPG

Description: Yet another blue glass piece is shown, which looks like it has some sort of circular logo on it.



IMG_1138.JPG

Description: A very small light blue piece with printing on it. All that can be made out is an "e". No other pieces of this color were noted as having markings.

Astrological Signs

The astrological signs start with Aeries at the bottom-left corner of the mosaic. They cross chronologically to the right until reaching Cancer to the left of the hands in the center. They then take a 90-degree turn going up to Virgo at the top. The hands in the center of the mosaic create a somewhat visual line to trace your eyes to the next sign. They start in again at the bottom to the right of the hands with Libra, move up to the top to Sagittarius, and cross the top to Pisces in the right hand corner.

IMG_1175.JPG – Aeries

Description: The Ram representing the sign of Aeries (March 21 to April 20). Here you can also see the sample that was taken from the mosaic when testing preservation methods. This sits in the bottom left hand corner of the mosaic

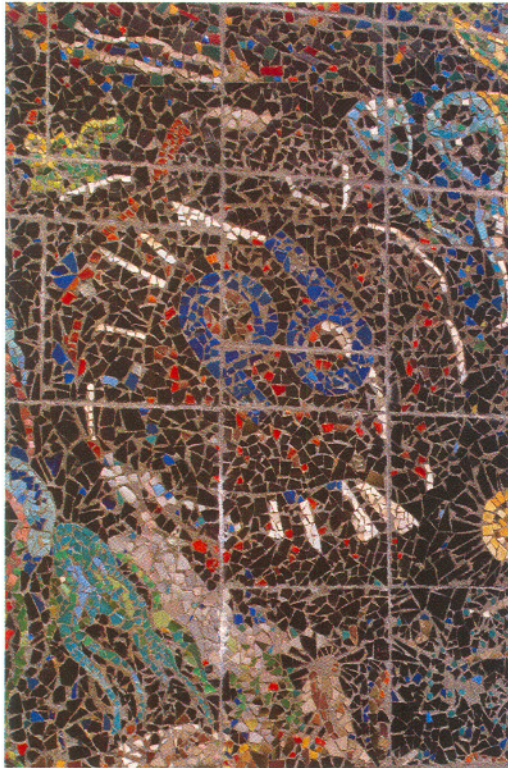


IMG_1174.JPG – Taurus

Description: The Bull representing the sign of Taurus (April 21-May 21). This is directly to the right of Aeries.

IMG_1173.JPG – Gemini

Description: The Twins representing the sign of Gemini (May 22 to June 21). This is to the right of Taurus.



IMG_1176.JPG – Cancer

Description: The Crab representing the sign of Cancer (June 22 to July 23). This is located to the right of Gemini.

IMG_1154.JPG – Leo

Description: The Lion representing the sign of Leo (July 24 to August 23). You can also see areas where pieces had fallen off and been restored with concrete. This lies above Cancer.



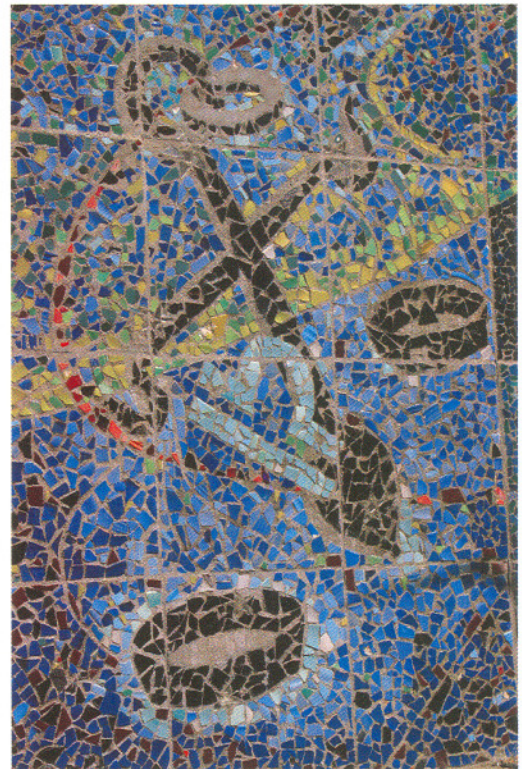


IMG_1171.JPG – Virgo

Description: The Virgin representing the sign of Virgo (August 24 to September 23). As with Leo, there are obvious signs of attempted restoration. Virgo is above Leo and to the left of the hands in the middle of the mosaic.

IMG_1156.JPG – Libra

Description: The Scales representing the sign of Libra (September 24 to October 23). This is on the bottom to the right of the hands in the middle of the mosaic.

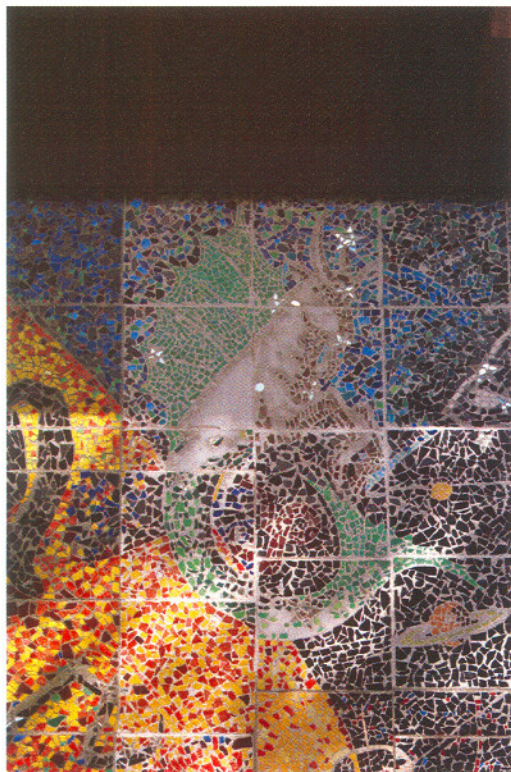


IMG_1155.JPG – Scorpio

Description: The Scorpion representing the sign of Scorpio (October 24 to November 22). Scorpio is above Libra.

IMG_1157.JPG – Sagittarius

Description: The Archer Centaur representing the sign of Sagittarius (November 23 to December 21). This is located above Scorpio.



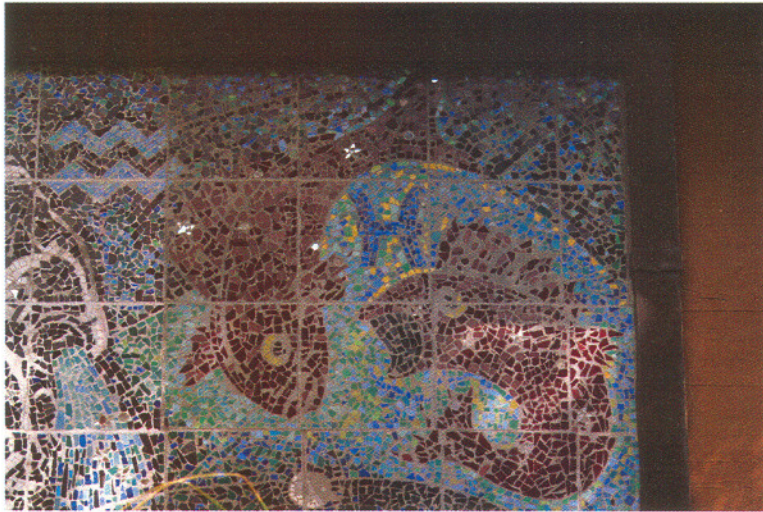
IMG_1159.JPG – Capricorn

Description: The Sea Goat representing the sign of Capricorn (December 22 to January 20). More signs of lots pieces are seen. This is located to the right of Sagittarius.

IMG_1161.JPG – Aquarius

Description: The Water Bearer representing the sign of Aquarius (January 21 to February 19). It is to the right of Capricorn.





IMG_1162.JPG – Pisces

Description: The Fish representing the sign of Pisces (February 20 to March 20). It is in the upper right hand corner of the mosaic.

The small planet on the bottom of the picture is possibly Pluto, but it is not confirmed.

Astronomical Symbols

The planets are quite hard to define, though some of them are obvious as to what they are. One planet does not have it's own picture, but you can see it in the bottom of the photo of Pisces.

IMG_1162.JPG

Description: This shows the phases of the Moon. In most cases a woman is considered to be the lunar deity (i.e. Artemis, Selene, and Diana). The woman shown is reaching for the nearby man's hand.

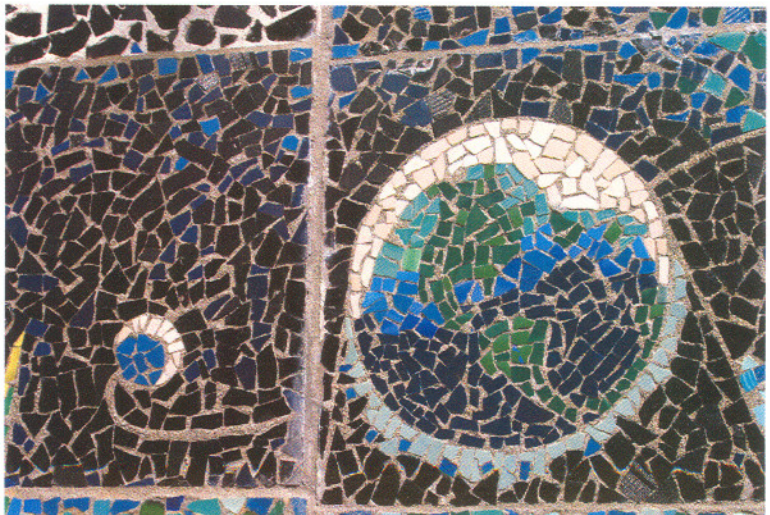


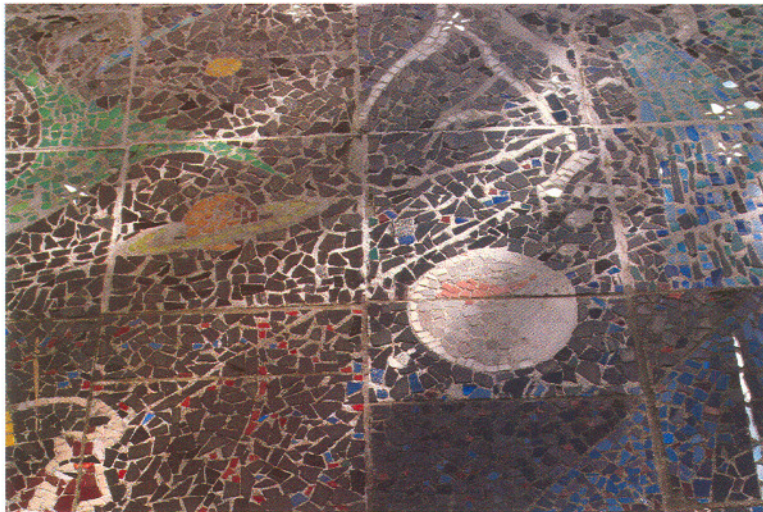
IMG_1167.JPG

Description: The Sun and the man which represents it. In contrast to the lunar deity, the solar deity is usually a man (i.e. Apollo and Helios).

IMG_1164.JPG

Description: Most obvious in this photo is the Earth. There is also a smaller round object which could be either Mercury or the Moon. Mercury is usually shown as a small blue planet, and the moon is already shown in a previous picture. But the line trailing from the planet looks like an orbit around the Earth. It is difficult to say for sure.





IMG_1165.JPG

Description: Telling from the reddish colored spot, the large planet must be Jupiter. With the rings, it's obviously Saturn. Only making assumptions from the order of the planets, but the smaller yellow planet near the top of the photo may be Uranus.

IMG_1166.JPG

Description: It is hard to tell which planets these may be. The orange is likely Venus, but the Grey planet seems out of place in the inner solar system. If the planet in the image of Pisces is in fact Pluto, and the other planet assumptions are correct, this may be Neptune. But if so, why would it be with the inner planets?



IMG_1168.JPG

Description: The red planet could only be Mars. Though, it seems a little odd that it is so far away from the rest of the planets.

